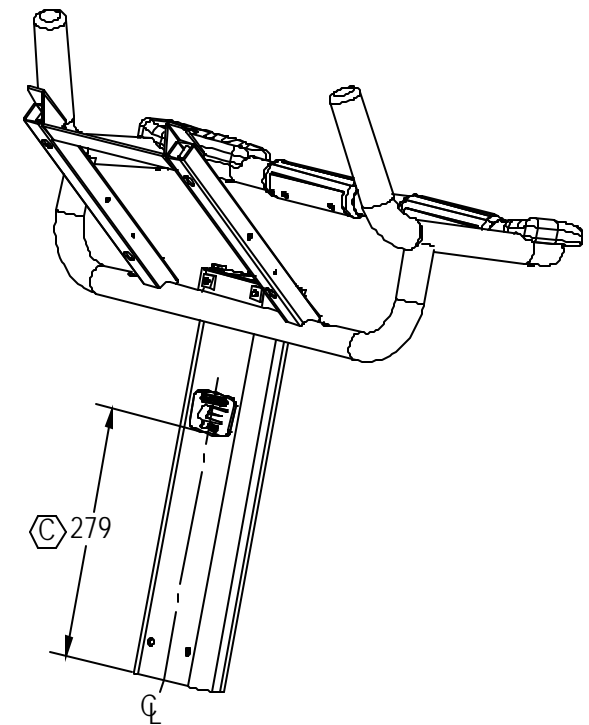
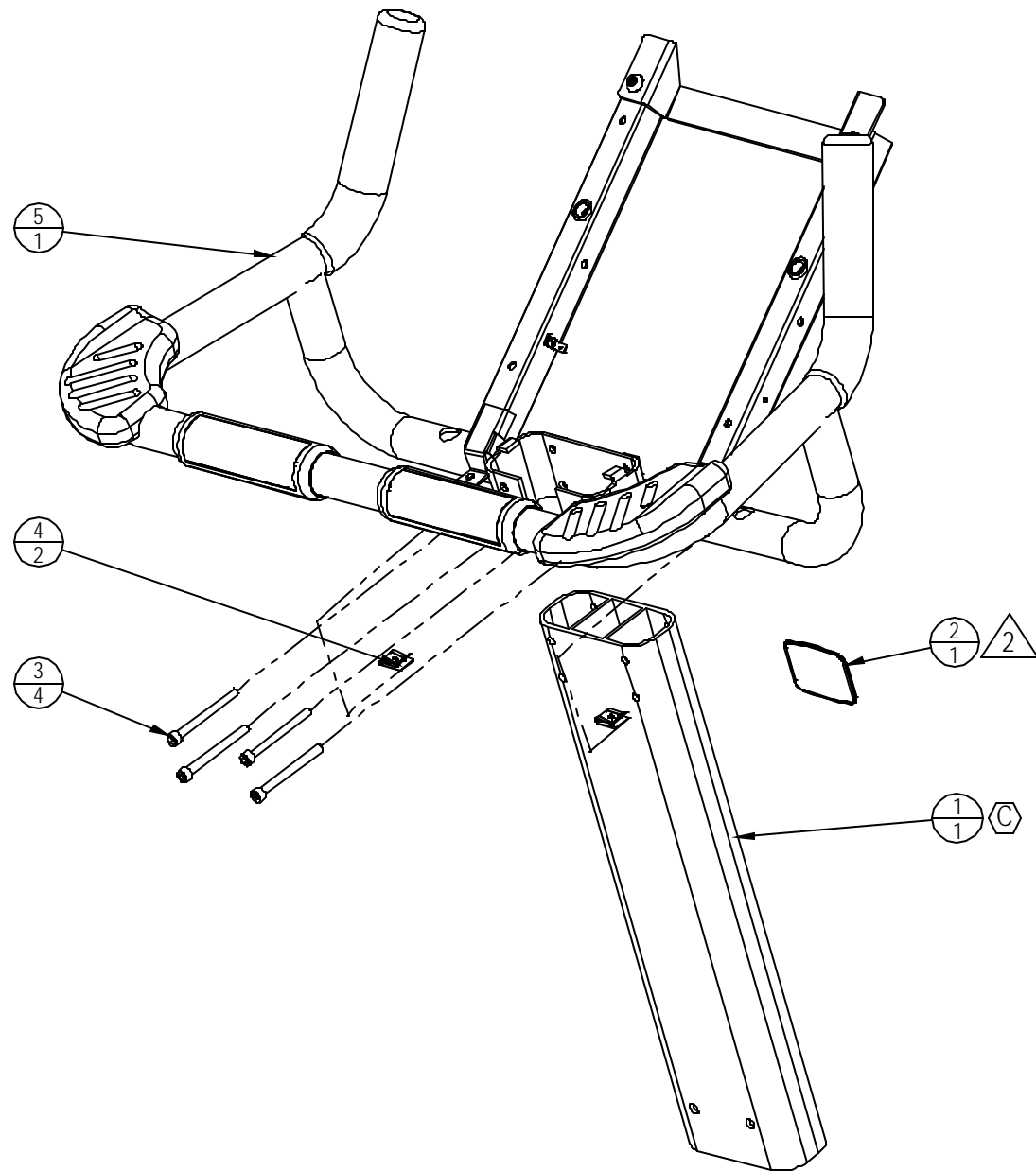


NOTES: 

1. COMPONENTS ARE SYMMETRIC ACROSS CENTERLINE
2. CLEAN SURFACE WITH ALCOHOL WHERE LABEL IS ADHERED

REVISION HISTORY				
REV	DATE	DESCRIPTION	ECO	BY
A	06-25-08	PRODUCTION RELEASE	11942	FJM
B	10-08-08	BOM: REMOVED P/N 020-7053, 020-7058, 020-7284, 050-2041, 110-3402, AND 120-3307	12037	AK
C	07-08-09	REPLACE 020-6551-05 FOR 020-7333; CHG DIM WAS: 254 IS: 279; ADD NOTES	12202	SCN



ITEM NO.	PART NUMBER	DESCRIPTION	QTY.
1	020-7333	MAST, E-UBe	1
2	050-2090	BADGE, PRODUCT, E-UB	1
3	110-3169	SCREW, M6x65, SHC, HE, ISO4762	4
4	140-3323	U-NUT, #8, PANEL .025-.125	2
5	718-5103	ASSY, HR BAR & GRIPS, UB, VLAD	1


**DOCUMENT STATUS:
RELEASE**

NOTICE OF PROPRIETARY INFORMATION
THIS DOCUMENT SHALL NOT BE REPRODUCED NOR SHALL THE INFORMATION CONTAINED HEREIN BE USED BY OR DISCLOSED TO OTHER EXCEPT AS EXPRESSLY AUTHORIZED BY UNISEN INC, D.B.A. STAR TRAC.

CLASS OF WORK	UNLESS OTHERWISE SPECIFIED DIMS ARE IN mm. TOLERANCES FOR MEASURE OF LENGTH ARE:								MATERIAL SEE BOM
	0.5 to 3	>3 to 6	>6 to 30	>30 to 120	>120 to 400	>400 to 1000	>1000 to 2000	>2000	
FINE	±0.05	±0.05	±0.1	±0.15	±0.2	±0.3	±0.5	-----	FINISH N/A
MEDIUM	±0.1	±0.1	±0.2	±0.3	±0.5	±0.8	±1.2	±2	
COARSE	±0.2	±0.3	±0.5	±0.8	±1.2	±2	±3	±4	
VERY COARSE	-----	±0.5	±1	±1.5	±2.5	±4	±6	±8	

ANGLES = ±2°
VENDOR: **N/A** P/N: **N/A**

THIRD ANGLE PROJECTION		
DRAWN	INITIAL FJM	DATE 02-18-08
CHECKED		
APPROVED		

UNISEN, INC. DBA

14410 Myford Road
Irvine CA 92606

STARTRAC PART NO
718-5177

TITLE
ASSY, HANDLEBAR, NO DISPL, E-UB

SCALE: 1:5 SHEET 1 OF 1 SHEET SIZE: B